

Research Point: Anthony Green and Contemporary Artists



Anthony Green, Study for Mrs Madeleine Jocelyne with her Son, 1987

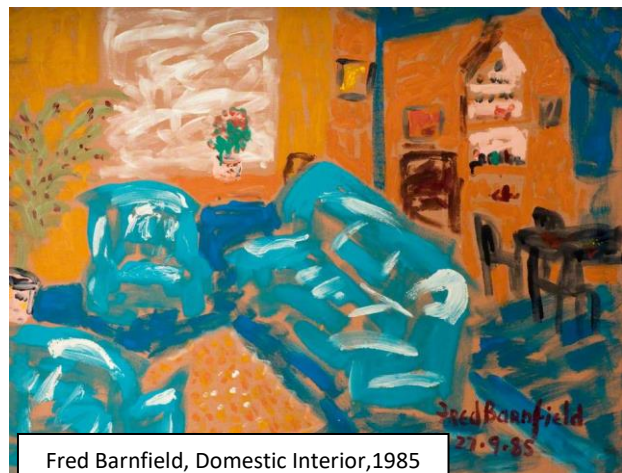
The imageⁱ on the left was created by a contemporary artist called Anthony Green. It is a study of what looks like a lady's living room from a very interesting bird's eye view.

I don't really know how I would go about working with unusual/ multiple viewpoints. I'd probably want to fade them into each other almost morphing them into one another – a little like a panoramic photograph.

I do like his viewpoint as it is quite unusual and his style is very different. It almost looks like a screwed-up piece of paper so is very interesting to look at. The colours are also gorgeous and bright just like the 80's. They remind me of a few other artists such as David Hockney and Fred Barnfield.

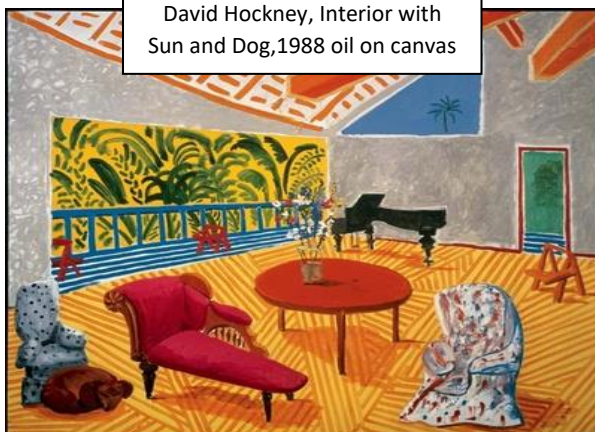
Fred Barnfield

Another artist who liked to concentrate on interior drawings was Fred Barnfield. The reason I chose to look at this artist is because I love the use of colour in his painting "Domestic Interior"ⁱⁱ. I also love the fact that you can tell what his picture is of, even though it is a few thick, fast marks of colour. It almost looks like he finger-painted it in a way. I like the contrast of colours as they are very 80's with the bright contrasts of the blue popping off the page. The angle of the larger sofa almost draws your eye into the painting, leading your eye to look at the background where a dining room table can be seen.



Fred Barnfield, Domestic Interior, 1985

Your eye then wonders around the painting taking it all in.



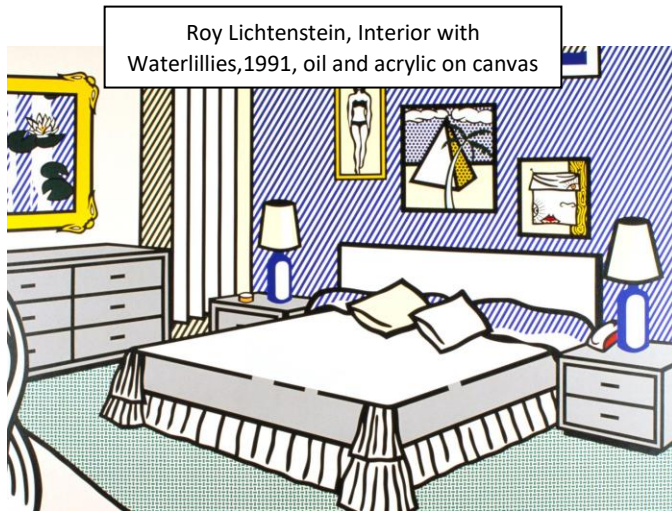
David Hockney, Interior with Sun and Dog, 1988 oil on canvas

David Hockney

I love this painting "Interior with Sun and Dog"ⁱⁱⁱ as it has some beautiful contrasting colours just like Fred Barnfield's "Domestic Interior". It also looks as though it has been painted from a corner of the room with its angled viewpoint. It's more detailed than that of Fred's – which I like however there is a sense of "pop art"

Research Point: Anthony Green and Contemporary Artists

starting to unfold by the straightness and precision of the lines on the floor. This ties in nicely with another artist I wanted to look at who was very into pop art – Roy Lichtenstein.



Roy Lichtenstein, Interior with Waterlilies, 1991, oil and acrylic on canvas

Roy Lichtenstein

I chose Roy's "Interior with Waterlilies"^{iv} because I like the pop art feel to it. Although it is different from the other artists I have already looked at, it does have a very similar linear effect as David Hockney's floor in "Interior with Sun and Dog".

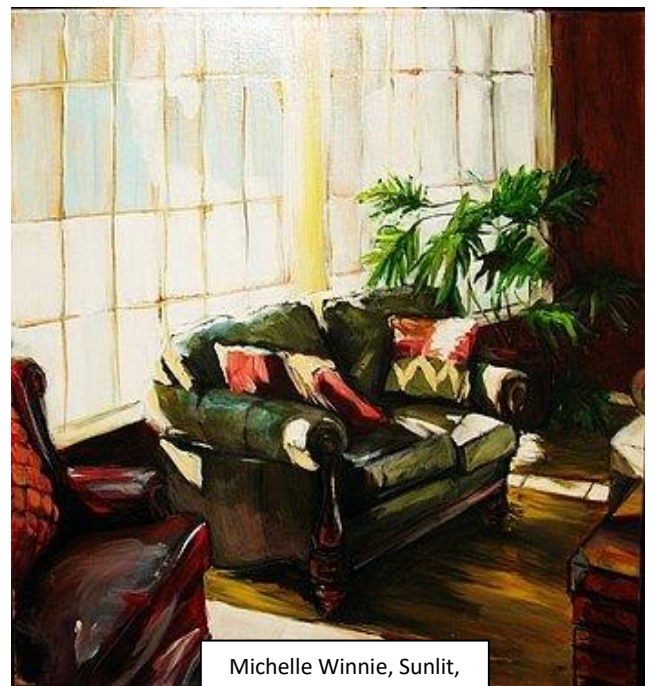
Pop art was very popular in the 1990's. Lichtenstein started his pop culture back in the 60's with comic strip-like paintings. When he decided to start his interior studies, apparently "he sourced the

images for this painting, as for others in his Interiors series, from advertisements found in the Yellow Pages". I think this was an awesome idea and he turned out some wonderful work.

Michelle Winnie

My favourite artist that I researched is the recent Michelle Winnie. I particularly admire her "Sunlit"^{vi} painting. She has put so much colour, expression and passion into a boring old sofa. I especially love the sunlight coming through the window and the fact that she has been expressive with her paint strokes, yet detailed enough to show what it is. It is simple and effective.

The angle at which this interior painting has been done is also very intriguing. The green sofa draws your eye into the middle of the painting where you then focus on the plant in the background and lastly notice the chair in the foreground. The fact that some of the objects in the room are also "cut off" makes it look more realistic and less of a prepared painting. It's almost as if she sat in a chair and started painting what she saw in front of her.



Michelle Winnie, Sunlit,

The colours are not so contrasting as those of the previous artists but I think the lovely light background of the window helps make the objects of this composition catch your eye. There are more tonal contrasts in this painting than in previous – which I prefer.

Research Point: Anthony Green and Contemporary Artists

ⁱ https://www.artfund.org/gallery/800x442/assets/what-we-do/art-weve-helped-buy/artwork/1993/ulster-museum/3995_C.jpg

ⁱⁱ <https://artuk.org/discover/artworks/domestic-interior-18479>

ⁱⁱⁱ <http://premierartscene.com/magazine/fisher-collection-sfmoma/>

^{iv} <http://www.tate.org.uk/art/artworks/lichtenstein-interior-with-waterlilies-t07339>

^v <http://www.tate.org.uk/art/artworks/lichtenstein-interior-with-waterlilies-t07339>

^{vi} <https://fineartamerica.com/featured/sunlit-michelle-winnie.html>